

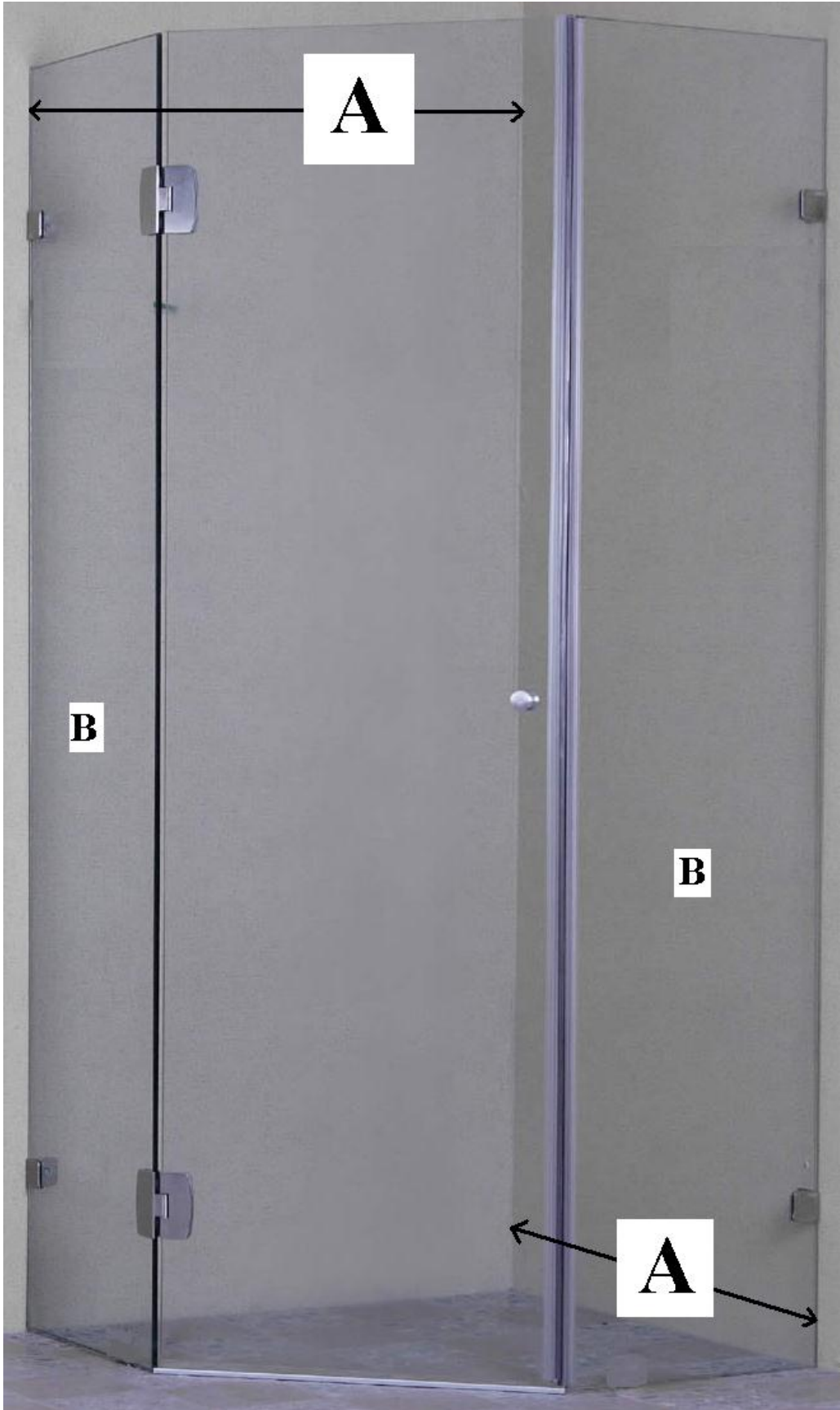
Diamond Shower Screen

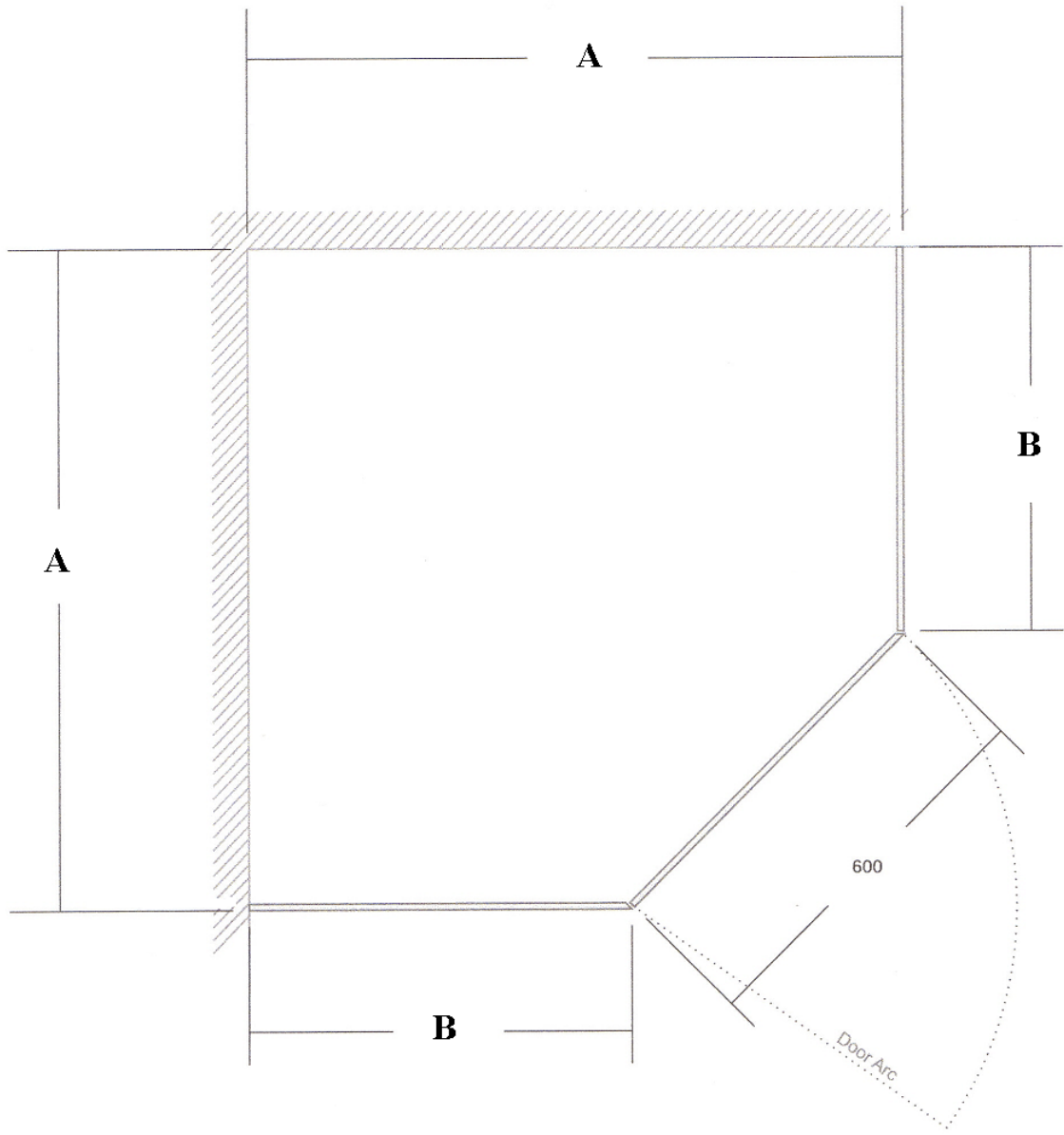
INSTALLATION MANUAL

- For the best installation the walls and floors need to be straight and level.
- We do not accept liability for consequential loss, nor for injury caused by circumstances beyond our control, including misuse, alteration, modification, incorrect installation or repair.
- We do not accept liability for loss, injury or damages to property as a result of DIY installations. We recommend that you get a professional to install the shower screens.

Important information

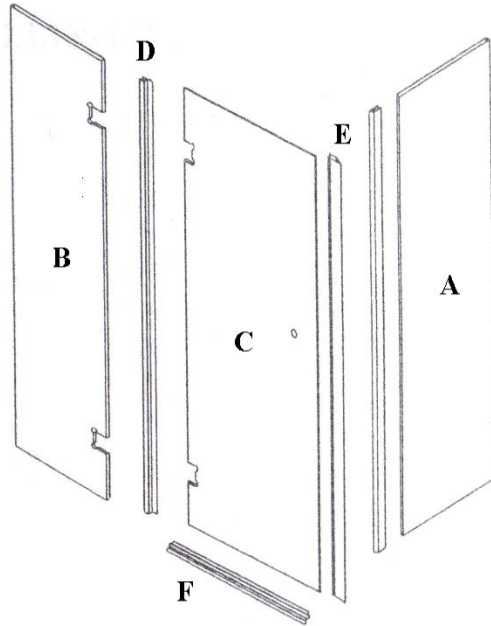
- Always rest the glass panels on padding such as a plastic to protect the glass from any damage. Never rest the glass panels directly onto a tiled surface. Take extreme caution not to cause any grinding or hard impacts to the glass panels. Safety glass will shatter if the above mentioned are not observed.





- Shower screen is reversible ie it can be installed as a RH opening as above or LH opening door
- Install the fixed panel with hinge cutouts first.
- The position of the brackets depends on the size you have purchased.
- For example if you have purchase a 900x900 shower screen the wall brackets should be installed so that once the panel is fitted dimension A (outside edge) measures 900mm.
- The brackets can be installed at any height however we recommend 250mm to the centre of the bracket from the top and bottom of the panel.
- Prior to installing the panel place two setting blocks (clear gaskets) on the floor to prevent the glass panel from resting on the tiled surface.
http://www.auswidesupplies.com.au/tooling/-d-i-y-products/shower-screen-installation-kit/prod_47.html
- Install panel as per drawing ensuring the panel is square and level. If the panel requires adjusting use additional setting blocks until the panel is plumb. Tighten brackets.
- Disassemble hinges. The hinge assemblies have a pivot half and a fixed half. The fixed half is installed on panel
- To attach the door use packing below the door to hold it at the correct height. Tighten both hinges before packing is removed.
- Install the magnetic seal on the door and fixed panel B (without hinge cutouts).
- Install two wall brackets as above for the second fixed panel.
- Attach metal floor strip onto the floor below the door using sealant. The strip may need to be cut to length.
- Cut all setting blocks flush with the glass using a sharp blade. Please note the setting blocks must remain under the panels
- Once you have cut the setting blocks be very gentle while opening and closing the door as a small movement can cause the panel to fall off the setting blocks.
- Seal glass panels to wall/floor using preferred GE Sanitary SCS2601 silicone. Apply a generous amount of silicone to the walls, floor and metal floor seal. Spray soapy water on wet silicone and clean excess silicone using applicator.
- For best results use AWS silicone applicator
http://www.auswidesupplies.com.au/tooling/-d-i-y-products/silicone-spatula/prod_41.html
- Do not use shower until sealant cures (at least 24hours)

Parts List



| Item | Description | QTY |
|------|---|-----|
| A | Fixed panel | 1 |
| B | Fixed hinge panel | 1 |
| C | Door | 1 |
| D | Seal (optional) Not required for miter cut panels | 1 |
| E | Magnetic seal | 1 |
| F | Metal floor strip | 1 |
| G | Shelf (optional) Sold separately | |
| | | 2 |
| I | Wall bracket | 4 |
| J | Hinge | 2 |
| K | Knob/handle | 1 |